

Chrysalis Weekend Worship Schedule

Day One: Faith
A Day of Dying with Christ
Symbol: Caterpillar



Day One
Morning Prayer –Dining Hall
Friday 7:00 a.m.

Setup before Friday 6:00 am: Setup altar table in Dining Hall against the long blank wall. Make sure the aisle is in front of the altar table. Make sure that the chairs are far enough back so that no one is crowded. You will need to make sure that songbooks have been placed in chairs. Use a rustic or wooden cross with butterfly. Place 2 candles on either side of cross. Use a plain white tablecloth or burlap. Make Kleenex is available.

Day One

Friday

Speaker's Prayer Chapel

Setup Friday 7:00 am: Assist the Speaker's Prayer Chapel with their setup. There are enough tablecloths, pictures, and candles, etc to help them. Worship has the glass holders and candles for each speaker talk (15). Make sure there is a brass hand cross out and place it in the Speakers Prayer Chapel. There need to be note cards and pens for special prayers.

Day One

Sponsor's Hour-Dining Hall

Friday 8:40 a.m.

Setup Friday 7:30 am: Setup altar table in Dining Hall against the long blank wall. Make sure the aisle is in front of the altar table. Make sure that the chairs are far enough back so that no one is crowded during communion. You will need to make sure that songbooks have been placed in chairs. Use a rustic or wooden cross with butterfly. Place 2 candles on either side of cross. Use a plain white tablecloth or burlap. After the caterpillars leave. Place the communion sacraments and lighter on table to light candles as Sponsors Hour begins. Place the cross/butterfly banner on wall. Make sure the large cross is ready for Sponsor's Hour. The cross should be placed near the communion table once Sponsor's Hour begins. Check to make sure the caterpillar's small crosses and caterpillar names are behind the podium. Make Kleenex available.

Day One
Conference Room
Friday 8:30 a.m.

Setup Friday 7:45 am:

Make sure that the small table in front of podium has:

Tablecloth

Candle (pillar candle works best)

Lighter/matches/snuffer

Bible/stand

Day One
Evening Meditation-Small Chapel
Jesus Standing at the Door
Friday 6:10 p.m.

Setup Friday 5:15 pm: Evening Meditation.

Starts at 6:10 pm. (Jesus standing at the door). Use the Jesus standing at the door picture behind the altar. There is also several Jesus statues in worship. Use a burlap cloth and dried flowers. Create a small stair pathway with burlap. Use your imagination. Dim the lights. Song books under chairs. Check tissue.

Day One

Prodigal-Big Chapel

Service of Reconciliation

Friday 9:00 p.m.

Setup Friday 8:00 pm: Prodigal and Cross Service.

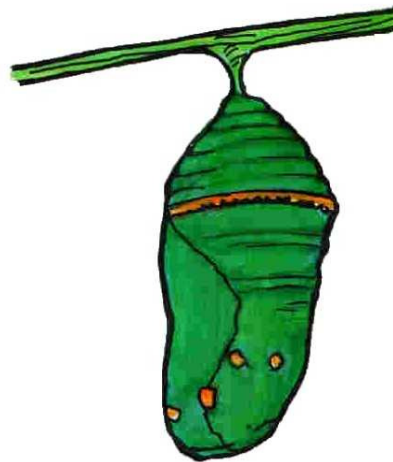
Starts at 9:00 pm. Use black cloth, wooden cross with crown of thorns, large nails, robe. Sandals at the base of the table on the floor. Place the big 6ft cross near fireplace. Place hammers and assorted nails in baskets at the base of the large cross. Cut red and/or white paper into fourths or heart shapes. Place paper and pens under each chair. Allow extras. No songbooks. Check and place extra tissue if needed. Make sure there are water bottles under podium for speaker. Dim the lights. Keep the area around the big cross dimly lit. Use the cross butterfly banner. Use the Jesus/thorns banner over table. Use other banners dealing with blood/sacrifice (there is room for up to three banners at a time). You can remove the prayer bench and Day One banner at this time. There may possibly be some large pillows available to use on the floor for prayer. The Spiritual Director will remove the sins/paper from the large cross following this service.

Day One
Night Meditation - Small Chapel
Friday 10:30 p.m.

Setup Friday 9:00 p.m. This will be the final chapel of the day. Setup the table simply. Use the brass cross, 2 candles, and plain tablecloth. Have the mood lighting set low. Make sure Kleenex is under chairs. Songbooks will not be needed. Caterpillars will leave in silence.

Chrysalis Weekend Worship Schedule

Day Two: Hope
A Day of Rising with Christ
Symbol: Chrysalis



Day Two

Morning Prayer-Big Chapel

Saturday 7:45 a.m.

Setup Friday 9:30 pm: Setup for Morning Prayer. Place a white tablecloth and wooden cross on table. Before bed tonight, the SD will burn the papers of the young people nailed to the cross. In preparation for Morning Prayer, the ashes are put in a (white) bowl. Place bowlful of ashes and pitcher of water on table. Put a wastebasket beside the table so the SD can empty the ashes into it from the bowl at the appropriate moment in the meditation. Toward the back of the table place a damp cloth or paper towel with which to wipe out the bowl. Leave the large cross in the corner. Remove the banners and replace them with the Day Two Banner (Hope). Bring in the prayer bench. Songbooks under chairs. Make sure that you check with Spiritual Director after setup to make sure everything meets his/her approval.

Day Two
Holy Communion-Big Chapel
Mime Communion
Saturday 1:40 p.m.

Setup Saturday 12:45 pm: Setup table with burlap cover. Use 2 candles, an empty plate, glass with juice, and napkins. Check with the Mime team and make sure that the “God’s Gift for You” box is complete. There will be a French bread loaf, blanket, cross, crèche, spike nails, crown of thorns, and other items in the box. Don’t place a picture behind the altar if the cross light show is being done. The mimes should have flashlights. You can place a communion banner if you wish, just not behind the altar. Check with the mime team for final approval. Make sure you have Kleenex. No songbooks.

Day Two

Personal Prayer Time-Small Chapel

Saturday 3:05 p.m.

Setup Saturday 2:35 pm: Get the humbles to setup one table (6foot) with 8 chairs in the Small Chapel. Move the other chairs against the wall. Have the altar setup in any way you choose. Place the prayer bench in front of the altar. Go to the speaker's prayer chapel and get the small brass hand cross. Place it on the altar. Place one of the prayer circles (with candle) and lighter on the table. Unlike Emmaus, Chrysalis personal prayer time is held in the chapel. The young persons may tend to wander off if allowed outside for prayer. Staying in the Prayer Chapel will help keep them focused.

Day Two

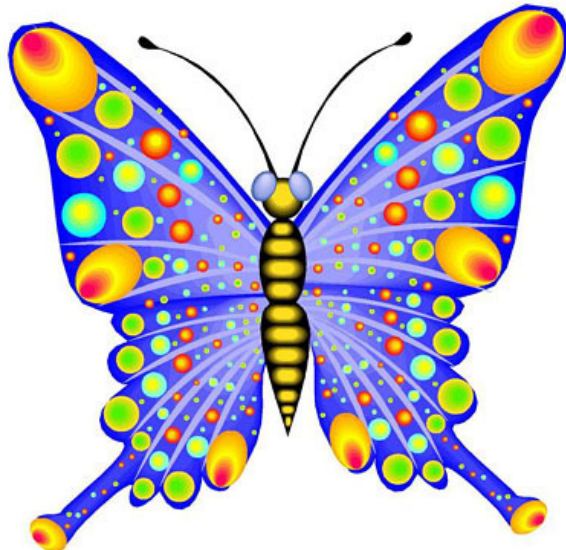
Candlelight Service-Big Chapel

Saturday 9:05 p.m.

Setup Saturday 6:00 pm: Move the altar table to the center of the riser against the back wall. Use whatever decorations you choose. Place a votive candle (furnished) for each of the caterpillars on the table. During the candlelight service, the community will pray for and light each candle for the caterpillars. Use pillar candles on the table if possible. They last longer. Wait till the caterpillar's candles are lit before lighting any other candles. Have 2 lighters ready. Place the brass cross on the table. Use flowers, more candles, in whatever manner you choose. Make multi levels. Use pebbles or even seashells. You can place flowers and/or candles on the fireplace. Hang a banner above the fireplace. Check to see how communion is going to be served. The mimes will tell you how to setup mime communion. We do recommend that the communion table is a separate small table that can be removed quickly right before actual candlelight. Remove the communion elements quickly as possible following communion. Setup three tables for use during Examination of Conscience. Place a votive candle and box of Kleenex on each. Place Kleenex boxes near the back door. Bring the small and large prayer bench into the main chapel and setup prayer stations. There are small electric candles that can be used as well.

Chrysalis Weekend Worship Schedule

Day Three: Love
A Day of Flying with Christ
Symbol: Butterfly



Day Three
Morning Chapel-Big Chapel
Let Your Light Shine
Sunday 7:30 a.m.

Saturday 9:45 pm: Setup the Chapel for “Let Your Light Shine”. The Mime team will show you how to setup the chairs and altar. A small brass cross is normally all that is on the table. Other items are needed. Apple, paper people, lunchbox, jacket, flashlights. The Mime Team should have these supplies. Place the Day Three Banner in the Chapel. Ask if the Mime Team wants the prayer bench back in the room. Songbooks under chairs. Kleenex under chairs.

After this Chapel you can start packing up. Leave all banners in the dining hall until lunch is over. Keep out a simple communion set for closing. You will need a cross, 2 candles, tablecloth, 2 glasses, 1 plate, and napkins.

Day Three

Closing-Dining Hall

Sunday 4:20 pm

Sunday 1:00 pm: Setup for closing. The table is placed against the long wall in Dining Hall. Use a white cloth, Chrysalis cross, 2 candles, plate of pita, 2 glasses of juice, and napkins. Keep one of the small plastic containers behind the table to place your table items in following closing. You will need to pack the table up quickly and make sure that the box is placed in with all the others boxes going to storage. Make sure that the humbles setup the chairs for the caterpillars and team. The conference room team will need to face the community. Make sure tissue boxes are placed and songbooks.